

**Product Information:**

Rail width and platform sizes shown are with option #416-102" wide tailgates. (96" wide tailgate is available.)

Model	Lifting Capacity	Min Dock Load Height	Platform Size: Width x Depth	Overall Rail Width	Shipping Weight
DV4560F	4,500 lbs.	40"	86" x 60" + 12"	100"	1865 lbs.
DV4572F	4,500 lbs.	46"	86" x 72" + 12"	100"	2045 lbs.
DV4584F	4,500 lbs.	52"	86" x 84" + 16"	100"	2074 lbs.
DV5560F	5,500 lbs.	40"	86" x 60" + 12"	100"	2077 lbs.
DV5572F	5,500 lbs.	46"	86" x 72" + 12"	100"	2233 lbs.
DV5584F	5,500 lbs.	52"	86" x 84" + 16"	100"	2389 lbs.
DV6660F	6,600 lbs.	40"	86" x 60" + 12"	100"	2090 lbs.
DV6672F	6,600 lbs.	46"	86" x 72" + 12"	100"	2240 lbs.
DV6684F	6,600 lbs.	52"	86" x 84" + 16"	100"	2400 lbs.

Standard 12" ramp is fixed and the 16" ramp is an aluminum hinged ramp.

**Standard Features:**

Power up and down. Hydraulic power open and close with no spring assist. Provides for smooth consistent cycling in all weather conditions and constant gate rate of descent regardless of the load on the platform.

Automatic self-leveling, self-bleeding hydraulic system for reliable low maintenance performance.

Independent sliding dock bumpers protecting the rails.

Life time warranty UHMW wear pads offer low maintenance.

Power unit installed, tested and sealed in one piece combination pump/control and battery box. Pre mounted hanger brackets are included for ease of installation.

Pre-mounted molded and potted 2 and 4 way marine toggle switches, circuit breakers and master disconnect switch.

LED lights in column – red/red or white/red.

Three year warranty

**Popular Options:**

Aluminum platforms (as shown on cover and inside of brochure).

Custom platform sizes as well as 12" and 16" hinged ramps.

Dock seal kits.

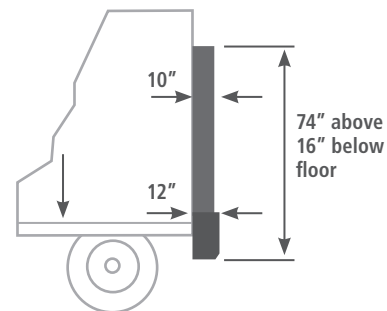
Dual ramp storage positions for running at dock level stowed position.

Trailer installation kits, Trailcharger.

Kick up cart stops.

Dual Pumps – standard on 5,500 lbs. and 6,600 lbs. models.

**Specifications:**



Bed Height Range  
40" laden - 58" unladen  
depending on platform size



Shown with Optional Aluminum Platform

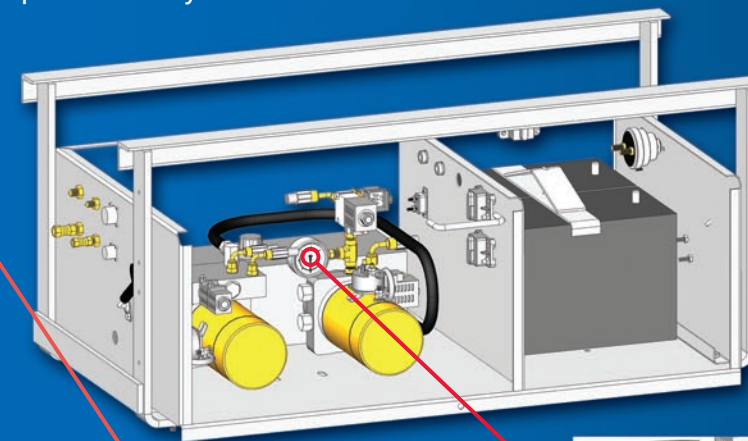
Ultron's DV Series Direct Vertical Lift system features our revolutionary hydraulic circuit design, life-time warranty UHMW wear pads, sliding heavy duty independent dock bumpers all innovatively designed for ease of operation, reliability and low maintenance.

**Designed Simplicity - Maximum Performance**

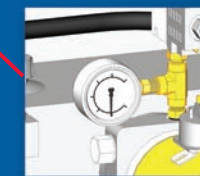
# Designed Simplicity - Maximum Performance



**Dual Pump and Motor** on 5,500 and 6,600 models work together. If one goes down, the other continues to provide power lifting the rated capacity. Pressure gauge standard for ease of troubleshooting. As standard equipment, combination pump/control battery box is pre-mounted to hanger brackets for quick and easy installation.



**Pressure Gauge**  
included on all capacities



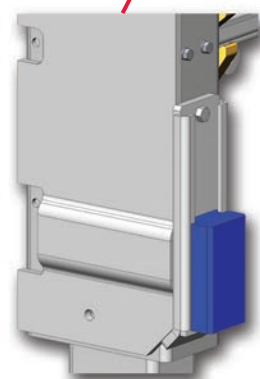
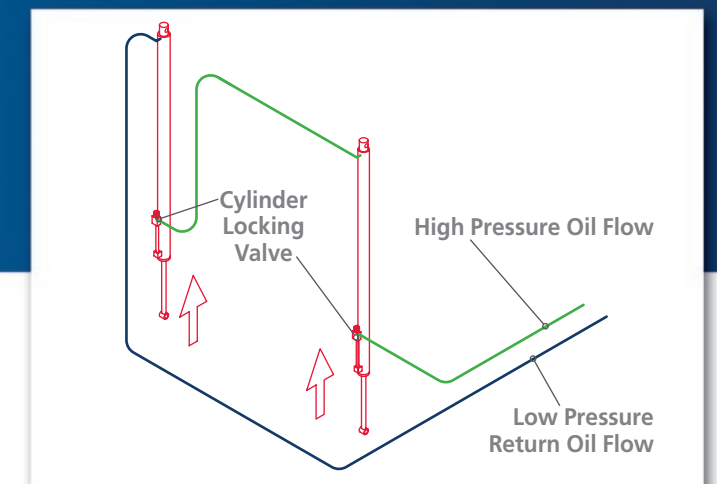
## Revolutionary Series Hydraulic Circuit Design and Automatic Self-Leveling System

Oil is pumped into one cylinder, and the oil displaced from the other end feeds the second cylinder.

- Load can be offset without compromising capacity
- Both sides are synchronous in movement
- Fully lubricated cylinders reduces seal wear and closed hydraulic system keeps out fluid contaminants such as dust and moisture

## Easy to Troubleshoot

- No 50-50 valves, no adjustable flow valves and no flow dividers to complicate the system
- Simple up/down valve and close valve



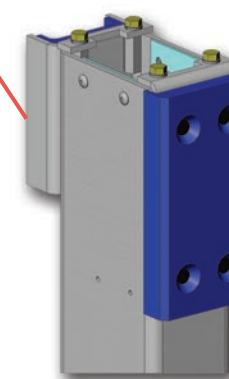
**Heavy Duty Independent Sliding Bumper** Impact is absorbed throughout the entire truck/trailer – not the liftgate itself. Moves up and down with truck/trailer at dock reducing damage caused during loading and unloading.



**Automatic Latching System** Latches liftgate in place automatically. Combined with power down this eliminates damage, wear and noise caused from bouncing and shaking. Cam lock automatically releases and allows platform to lower without opening platform for dock loading.



**Pre Mounted Molded Case and Potted Toggle Switch** with steel guard is pre-installed on passenger side column. Second toggle switch moves up and down with the platform.



**UHMW Wear Pads** on sliders have lifetime warranty eliminating high cost of maintenance of rollers.

Ultron manufactures a wide range of liftgates for many different style vehicles with capacities ranging from 1,250 to 6,600 lbs.

Call us at: **800.289.1335** or visit us at: [www.ultronlift.com](http://www.ultronlift.com)