

EC3200

THE EC SERIES OF SERVICE CRANES BY





■ SPECIFICATION INFORMATION

Crane Rating: 11,500 ft-lbs (1.59 ton-meters)
 Standard Boom Length: 7' (2.13 m) from CL of Crane

Boom Extension:
 • 1st stage: Hydraulic 48" (121.9 cm)
 • 2nd stage: Manual 48" (121.9 cm)

Max. Horizontal Reach: 15' (4.57 m) from CL of Crane

Maximum Vertical Lift:
 (from crane base) 16' 2" (5.28 m)

Boom Elevation: -5 to +80 degree

Stowed Height:
 (crane only) 24" (61.0 cm)

Mounting Space Required: 18" x 15" (45.7 x 38.1 cm)

Shipping Weight: 730 lbs (331 kg)

Controls: Radio control standard for all functions

Winch

- Rope Length: 65' (19.8 m)
- Rope Diameter: 7/32" (.56 cm)
- Line pull speed: 15 ft/min (4.6 m/min)
- Max. single part line: 1600 lbs (725 Kg)
- Max. double part line: 3200 lbs (1450 Kg)

Rotation: 410 degree power
 (worm gear)

Lifting Capacities: 1625 lbs @ 7' (737 Kg @ 2.1 m)
 640 lbs @ 15' (260 Kg @ 4.6 m)

Power Supply Required: 12 volt power unit
 2.0 gpm @ 2600 psi
 (7.57 lpm @ 179 bars)

■ DEFINING CHARACTERISTICS

Planetary Drive Winch System

The winch is equipped with a 1.8 HP permanent magnet electric motor with a 261:1 planetary gear reduction system. This ensures that your winch will never quit lifting before it reaches the full rated capacity.

Double Boom Design

The double boom design makes it nearly twice as strong as the nearest competitor.

Gear Bearing Rotation

Uses same rotation system as the larger class cranes. There are no plastic bushings or brass gears in the rotation system. It uses a high strength steel ball bearing turntable gear, a high strength steel worm gear, and a cast steel worm gear housing.

Integral Rotation Stop

410 degrees of rotation with an integrated rotation stop. Integrated stops allow you the greatest performance while protecting wires and hoses from damage.

15' of Reach

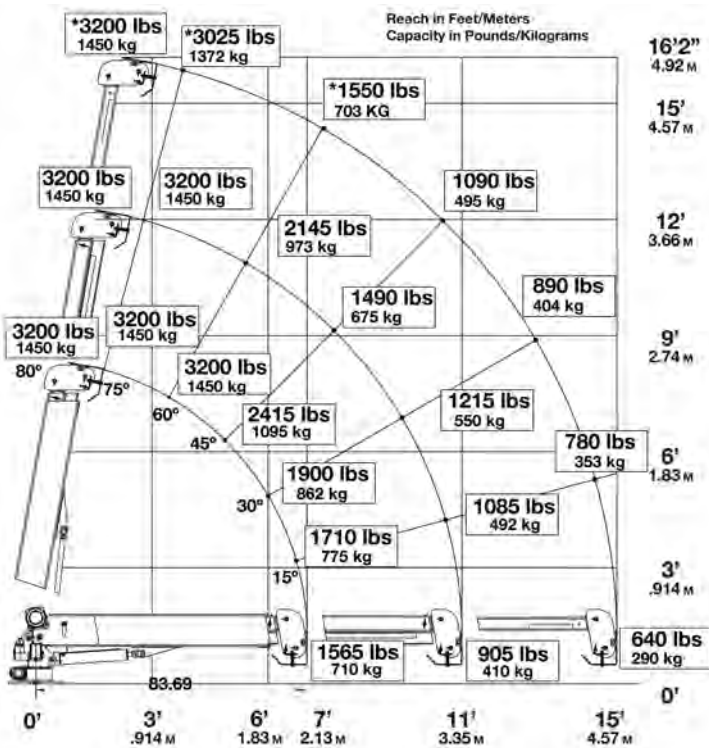
Hydraulic 1st stage extension. Manual 2nd stage extension.

Radio Remote

Comes standard with a radio remote control.

NOTE: All Stellar cranes meet ANSI B30.5 and OSHA 1910.180 specifications. Specifications subject to change without notification.

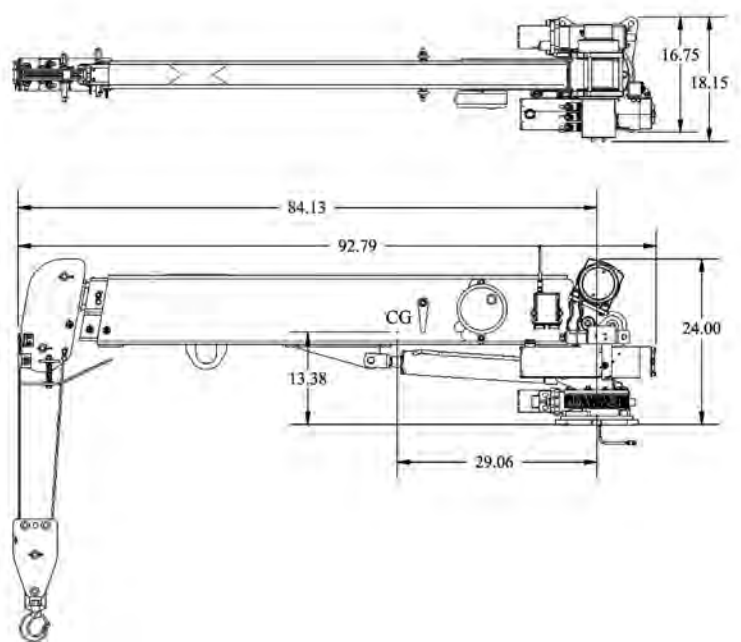
■ EC3200 CAPACITY CHART



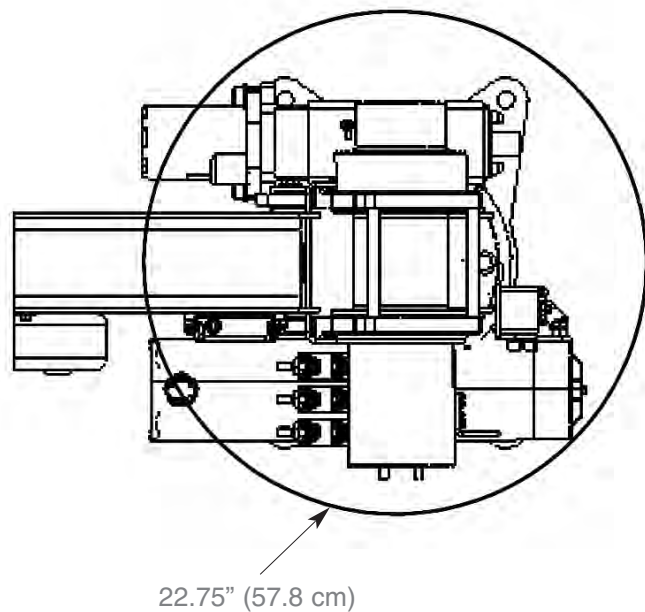
Weight of load handling devices are part of the load lifted and must be deducted from the capacity.

Maximum 1 - part line capacity is 1600 lbs. (726 kg). For greater loads, use 2 - part line.

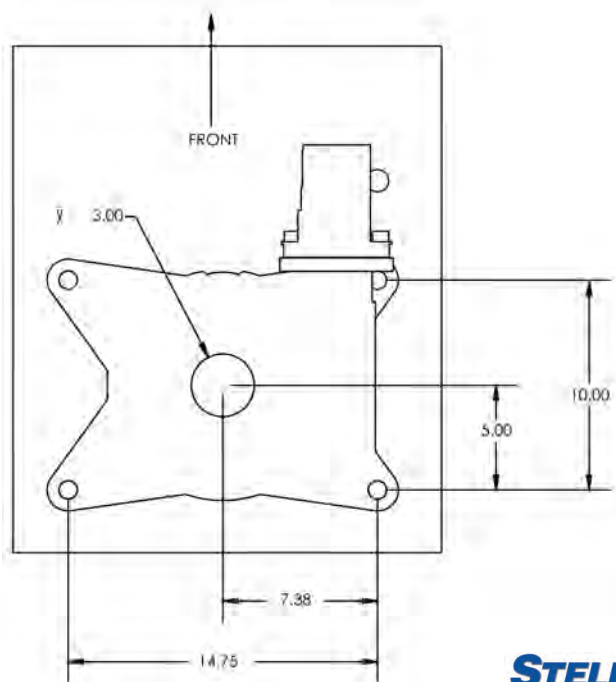
■ GEOMETRIC DIMENSIONS



■ ROTATIONAL CLEARANCE

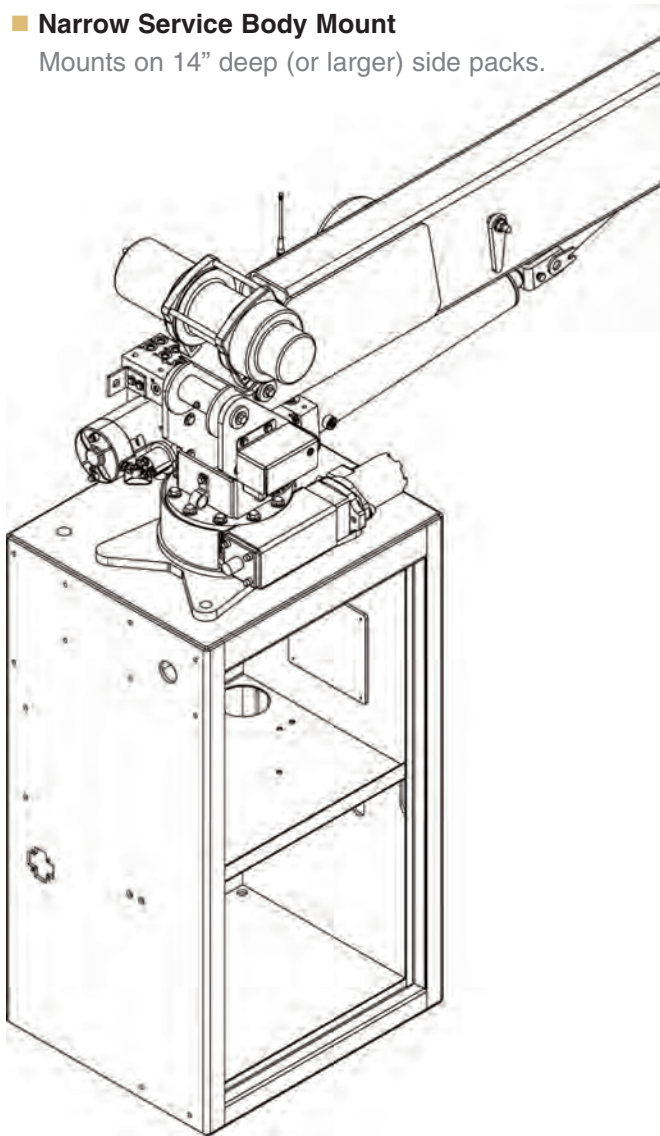


■ HOLE MOUNTING DETAIL



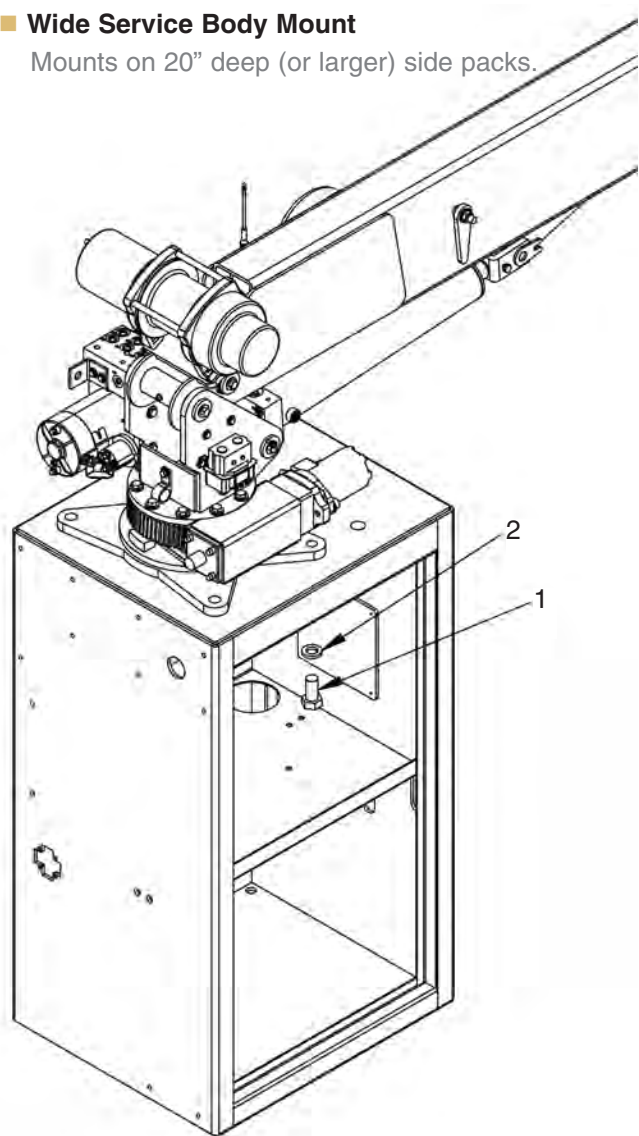
■ **Narrow Service Body Mount**

Mounts on 14" deep (or larger) side packs.



■ **Wide Service Body Mount**

Mounts on 20" deep (or larger) side packs.



Item	Part	Description	Qty.
1	42985	Cap Scr 0.88-9x1.75 HHGR8ZY	4
2	8648	Washer 0.88 SAE GR8	4

Your local dealer:



Our People. Our Products.

190 State Street
 P.O. Box 169
 Garner, IA 50438
 Telephone: (641) 923-3741 • (800) 321-3741
 Fax: (641) 923-2812
 Internet: www.stellarindustries.com
 Email: sales@stellarindustries.com

An Employee Owned Company.
 Copyright © 2008 Stellar Industries, Inc.