

CLASSIC II™ ALUMINUM SERVICE BODIES



Shown with poached anti-slip frame mounted bumper and optional C2-50 options package

Expect more standard features and better fuel economy!



Rugged, Green-Friendly Aluminum Service Bodies

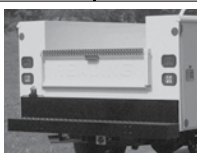
- Increased payload capacity
- Less wear and tear on chassis
- Greater residual value at the end of life-cycle
- Inherently corrosion-resistant
- Easily recycled

Classic II™ Aluminum Service Bodies

The Aluminum Classic II offers an unbeatable combination of standard features, useful options, and the know-how of over 25 years of refinement. This service body is designed for efficiency today, and built to last for tomorrow.



1/8" Aluminum Diamond Floor Plate & Tailgate Inner Panel
Rugged aluminum diamond surface provides additional corrosion protection & better traction.



Slam Action Tailgate
with a polished stainless steel handle and convenient pickup-style design. Equipped with rugged double-panel aluminum construction and durable stainless steel hardware.



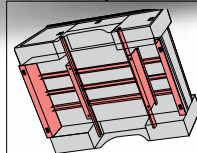
Poached Anti-Slip Frame Mounted Bumper
The bumper is frame mounted and poached with recessed corner mounted L.E.D. marker lights.



Modern Rectangular Long Life L.E.D. Tail Lights
Leak resistant.



Removable Stainless Steel Tailgate Knee Brace
Allows the tailgate to swing down completely.



Rugged Aluminum Understructure
Fully unitized welding, with U-beam girders braced and reinforced at all critical points. Acrylic E-coat primed and coated with a tough water-based undercoating that meets all environmental regulations.

10 year
limited
warranty



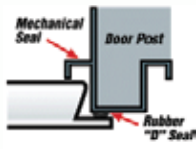
- 1** All Aluminum Construction
- 2** E-Coat Primer
- 3** Powder Coat Finish



Shown with Pooched anti-slip frame mounted bumper with L.E.D. lights and optional C2-50 options package



Heavy-Duty Compartment Doors
16-gauge aluminum outer and inner door skin with double-paneled construction with internal reinforcement.



Exclusive Dual-Pro® Seal System
The patented design increases clear door openings in every compartment of the body. The large automotive quality bubble type seal and mechanical seal provide a dual line of defense against weather.



Patented Hidden Hinges
Industry exclusive overlapping door construction that resists forcible entry. The robust and concealed hinge design provides protection against corrosion and does not require frequent lubrication or maintenance.



Complete stainless Steel Rotary Locks
Attractive appearance rust resistant. Features a double bolted high quality locking cylinder, adjustable striker pins and an O-ring seal to prevent water intrusion.



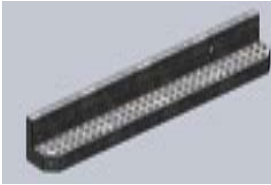
Nitrogen Strut Door Holders
All vertical compartment doors are equipped with nitrogen strut door holders where the internal dampeners control the opening and closing.



Aluma-Fill®
Aluminum fuel fill receptacle protects the body from accidental nicks and scratches.

STANDARD INDEPENDENTLY MOUNTED BUMPER SELECTION

Single Wheel Bumper with L.E.D. lights



Single Wheel Recessed Bumper with L.E.D. lights



Dual Wheel Bumper with L.E.D. lights



Dual Wheel Recessed Bumper with L.E.D. Lights



Powder Coating

- Polyester powder is sprayed on the body, then melted to form a highly durable white finish
- Resistant to corrosion, chemicals, humidity, scratches, chips, and impact
- Brighter finish
- Tolerant of UV exposure

C2-50 OPTIONS PACKAGE - OPTIONAL



Latch-Matic® with Optional Audible Alarm System

- One touch simultaneously locks or unlocks all compartments on the body
- Two high quality key fob transmitters with 25 ft. range
- Optional audible alarm is enabled by locking doors with the key fob transmitter
- Proven, automotive quality components with concealed wiring and hardware
- Compartment doors can be locked individually with keys (provided)
- Three year limited warranty on parts & service



Compartment Lighting System

- Works in conjunction with the Latch-Matic system
- Lights are activated when compartment doors are unlocked & go off when doors are locked
- Programmed to go off automatically after 10 minutes
- Lights feature impact resistant Lexan lenses
- Includes additional light for cargo bed



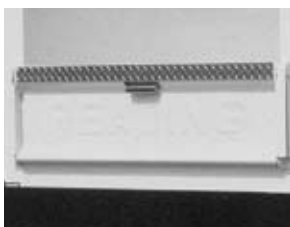
Extend-A-Shelf™ Drawer Unit

- Modular compartment drawer system provides easy installation & removal from one compartment to another
- Three drawers with *patented* grab handles which permit easy one-handed operation and help secure drawers when compartment door is closed
- Shelves operate on 250-lb. capacity ball bearings



Bright Finish Aluminum Treadplate Gravel Guards on Front of Body

- Protects lower compartments against stone damage
- Will not rust



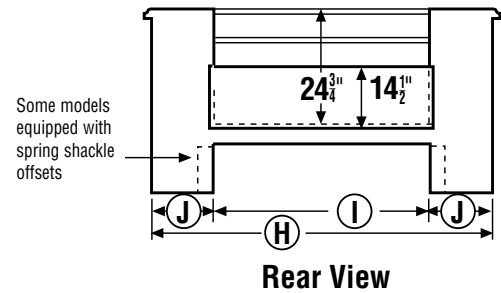
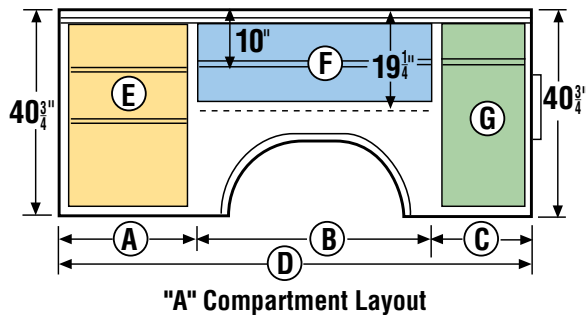
Bright Finish Aluminum Treadplate Tailgate Cover

- Protects tailgate from dents and rust
- Provides extra support and strength

DIMENSIONAL DATA: STANDARD ALUMINUM BODIES

Model	Approx. Weight		Cab-to-Axle	A	B	C	D	Approximate Compartment Clear Door Openings					
	Steel	Alum.						E	F	G	H	I	J
AL U98-SW	1026#	563#	56"	28"	48"	22"	98"	22-1/2"x35-1/4"	46-1/2"x14"	16-1/2"x35-1/4"	76-1/2"	48-1/2"	14"
AL U108-DW	1252#	689#	60"	34-3/4"	47"	26-1/4"	108"	29-1/4"x35-1/4"	45-1/2"x14"	20-3/4"x35-1/4"	93"	50"	21-1/2"

Models AL U98-Single Wheel and AL U108-Dual Wheel



Standard shelf and divider equipment

All shelves removable, all dividers removable and adjustable. Dividers interchangeable on most shelves. **(8) shelves:** 98, &108 models. **(32) dividers:** 98 models. **(40) dividers:** 108 models



ESTIMATED FUEL SAVINGS

98" SW Service Body - 550 pound weight savings

Annual Miles Driven	10,000	15,000	20,000	25,000
Est. Average Fuel Mileage - Steel Body	15	15	15	15
Est. Fuel Mileage - Aluminum Body	16.2	16.2	16.2	16.2
Fuel Cost per Gallon	\$4.00	\$4.00	\$4.00	\$4.00
Gallons per Year - Steel Body	667	1,000	1,333	1,667
Gallons per Year - Aluminum Body	617	926	1,235	1,543
12 Month Fuel Cost - Steel Body	\$2,667	\$4,000	\$5,333	\$6,667
12 Month Fuel Cost - Aluminum Body	\$2,469	\$3,704	\$4,938	\$6,173
12 Month Fuel Savings/Gals.	49	74	99	123
12 Month Dollar Savings	\$198	\$296	\$395	\$494

108" DW Service Body - 750 pound weight savings

Annual Miles Driven	10,000	15,000	20,000	25,000
Est. Average Fuel Mileage - Steel Body	14.7	14.7	14.7	14.7
Est. Fuel Mileage - Aluminum Body	16.17	16.17	16.17	16.17
Fuel Cost per Gallon	\$4.00	\$4.00	\$4.00	\$4.00
Gallons per Year - Steel Body	680	1,020	1,361	1,701
Gallons per Year - Aluminum Body	617	926	1,235	1,543
12 Month Fuel Cost - Steel Body	\$2,721	\$4,082	\$5,442	\$6,803
12 Month Fuel Cost - Aluminum Body	\$2,469	\$3,704	\$4,938	\$6,173
12 Month Fuel Savings/Gals.	63	94	126	157
12 Month Dollar Savings	\$252	\$378	\$504	\$630

Savings based on government fuel saving guide website - www.fueleconomy.gov



Ready Van



Classic Service Van (CSV)



SL Service Bodies



Classic II Service Bodies



Crane Bodies



Landscape Body



Forestry Body



Dump Body



Redi-Dek



Platform Bodies



Drop Side Dump Body

Sold and serviced locally by:



Please note that some items shown in photographs are optional. Reading, Aluma-Fill, Aluma Chock, Grip-n-Glide, and Latch-Matic are registered trademarks and Classic II, is a trademark of Reading Truck Body, LLC in the United States and in some foreign countries. ©2009 Reading Truck Body, LLC All dimensions subject to plus or minus tolerance of 1/4" and all dimensions and specifications are subject to change without notice RTB09-ALUCII-10M-02

800.458.2226 | readingbody.com
www.GoRuggedGreen.com